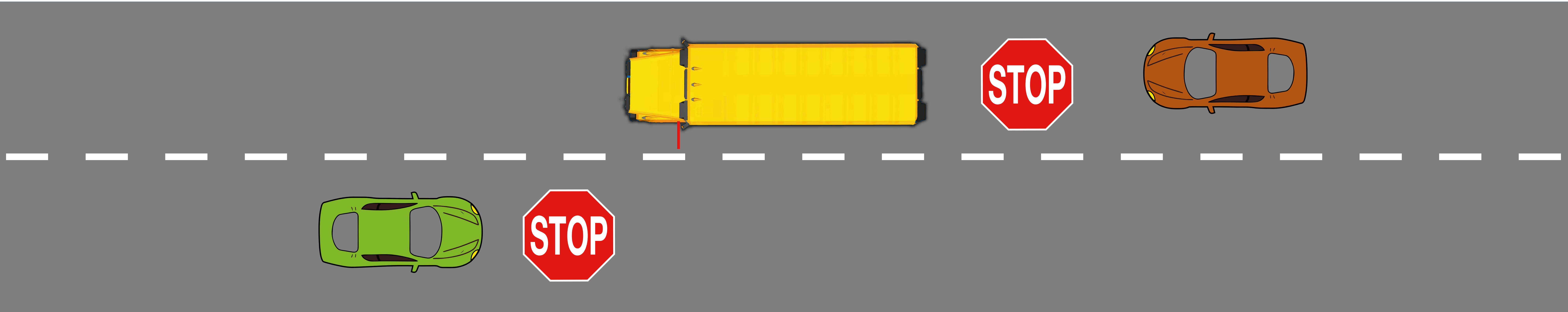




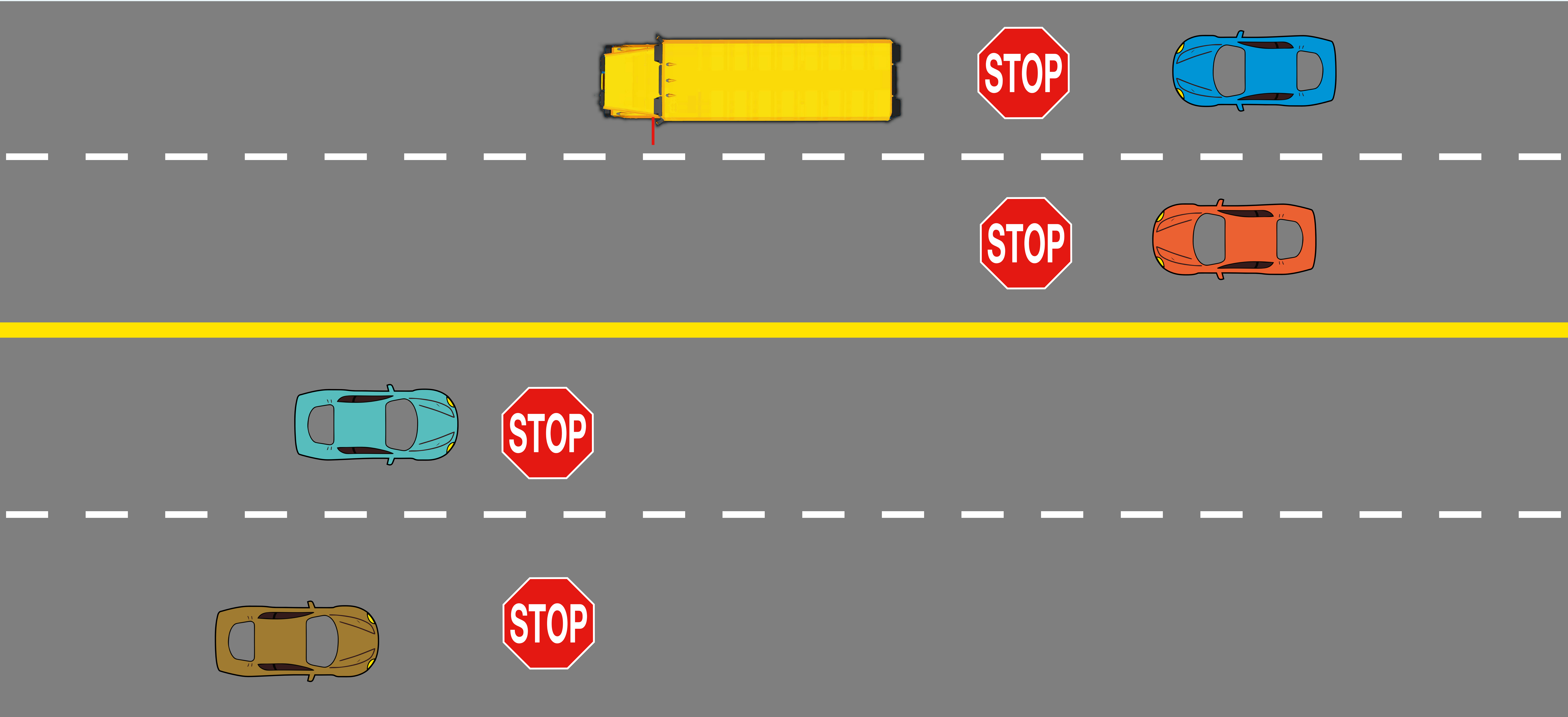
When we stop, you stop.

• Road Rules •



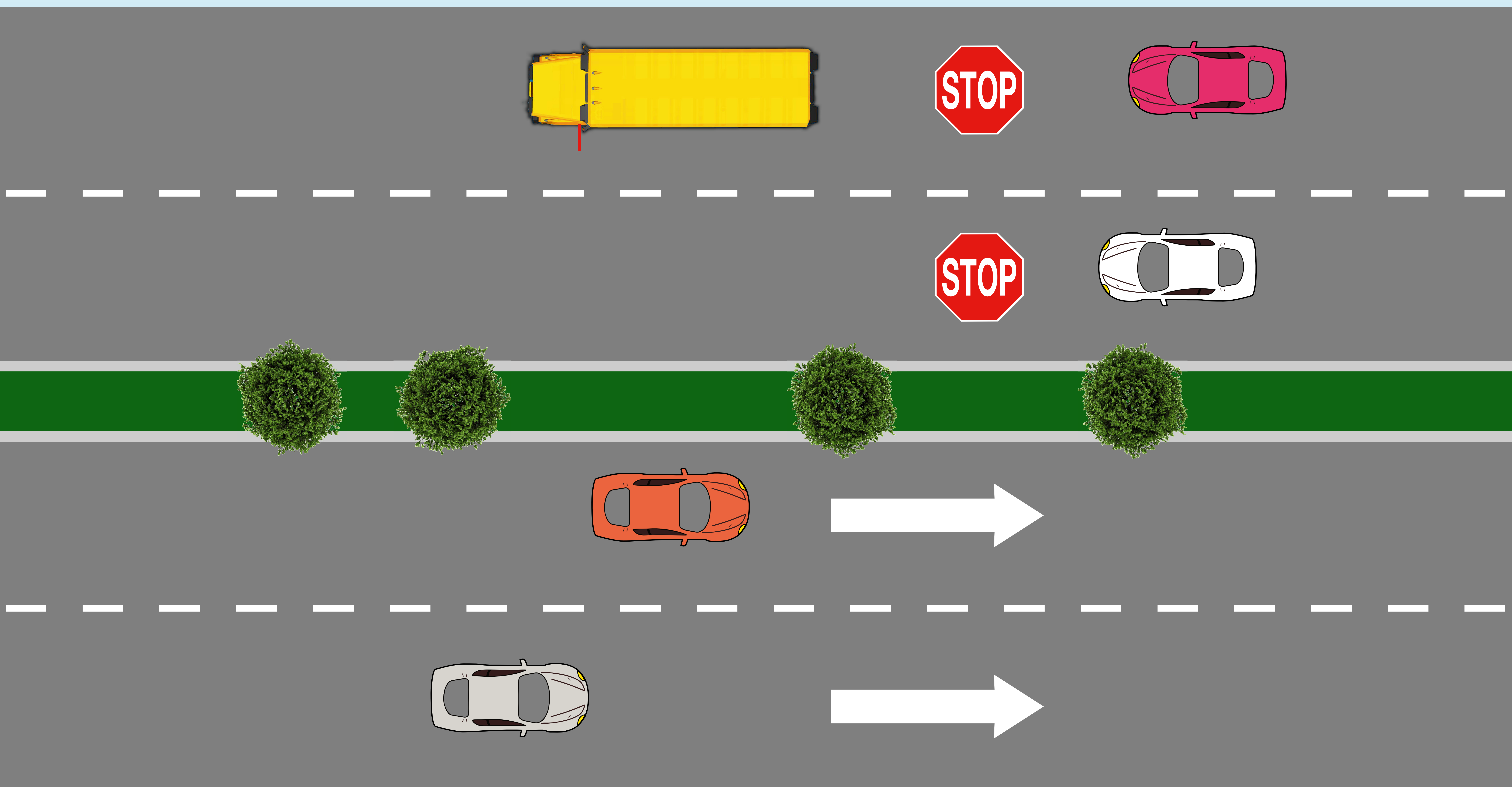
Two Lane Roadway:

When a school bus stops for passengers all traffic in both directions must stop



Three and Four Lane Roadway with no median:

When a school bus stops for passengers all traffic in both directions must stop.



Four Lane Roadway with median:

When a school bus stops for passengers traffic following the bus must stop.

**Bus Routes are posted on the
School District's Website**